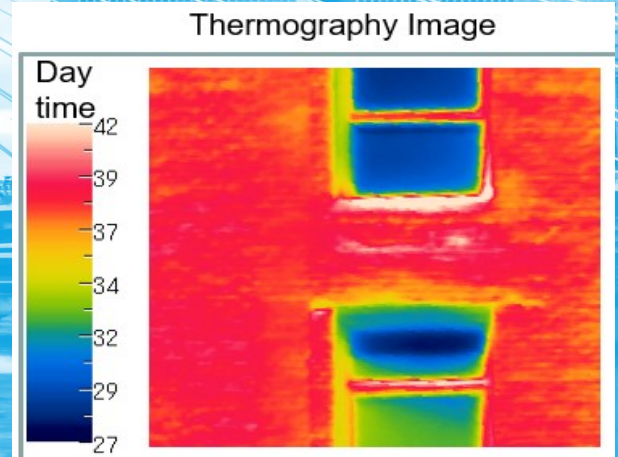
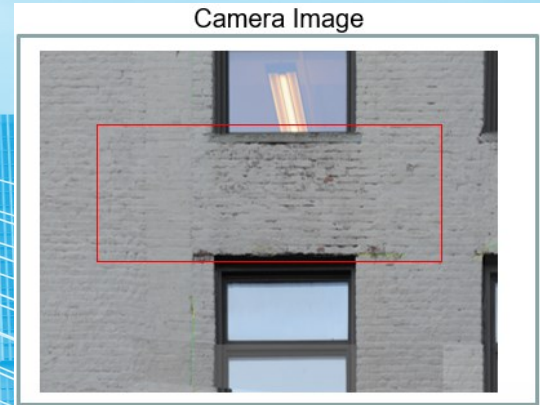


Infrared scanning is commonly used to inspect leakage and insulation status in residential or commercial buildings. NEXCO couples this application with HD visual data to capture and spatially measure problem areas.

Our robotic, tripod-mounted system ACS captured the dataset for this project, and produced clear indications of water collection, excessive mortar loss, spalling, and cracking in the building façade.



## Project Details

Client	[NYC Engineering Firm]
Reference	[Info withheld]
Surface Area	7,126 sqft
Project Period	10/2014

## Impression

The façade was located in the middle of New York City, where rappelling in tight spaces is needed to accomplish hands-on inspections. Or, inspections are not carried out properly in the face of access difficulties/costs. This method, however, allowed the field team to set up a block away on the sidewalk with little disruption to pedestrians and no disruption to roadway traffic. The quality of the report and ease of collection.